



# E-TECH

CIVIL & ELECTRICAL



[VIEW OUR WEBSITE](#)

Australia | UK | Ireland



# WHO WE ARE



E-Tech Group are a corporate company bringing wealth and knowledge across the electrical, mechanical, and civil in the infrastructure and rail sectors.

E-Tech Group delivers quality commercial, industrial infrastructure and Labour Hire services to clients throughout Australia. We offer a full range of civil, electrical, mechanical and telecommunication construction services from, site remediation to roadworks, from civil to commercial infrastructure.

E-Tech Group prides itself on delivering exemplary and reliable service to builders, developers, state and local governments and contractors anywhere in the Sydney area and beyond. We work closely with our clients to tailor our solutions to their specific needs from design and installation through to repairs, service, and ongoing maintenance.

E-Tech Group capabilities stems from our diverse range of previous successfully completed projects. We pride ourselves on our exceptional customer service, our ability to deliver on time on budget at a competitive cost and our extensive industry experience.







E-Tech Group are fully Licensed & Code Compliant in all sectors. Protecting our environment is paramount in maintaining a healthy and safe working place.

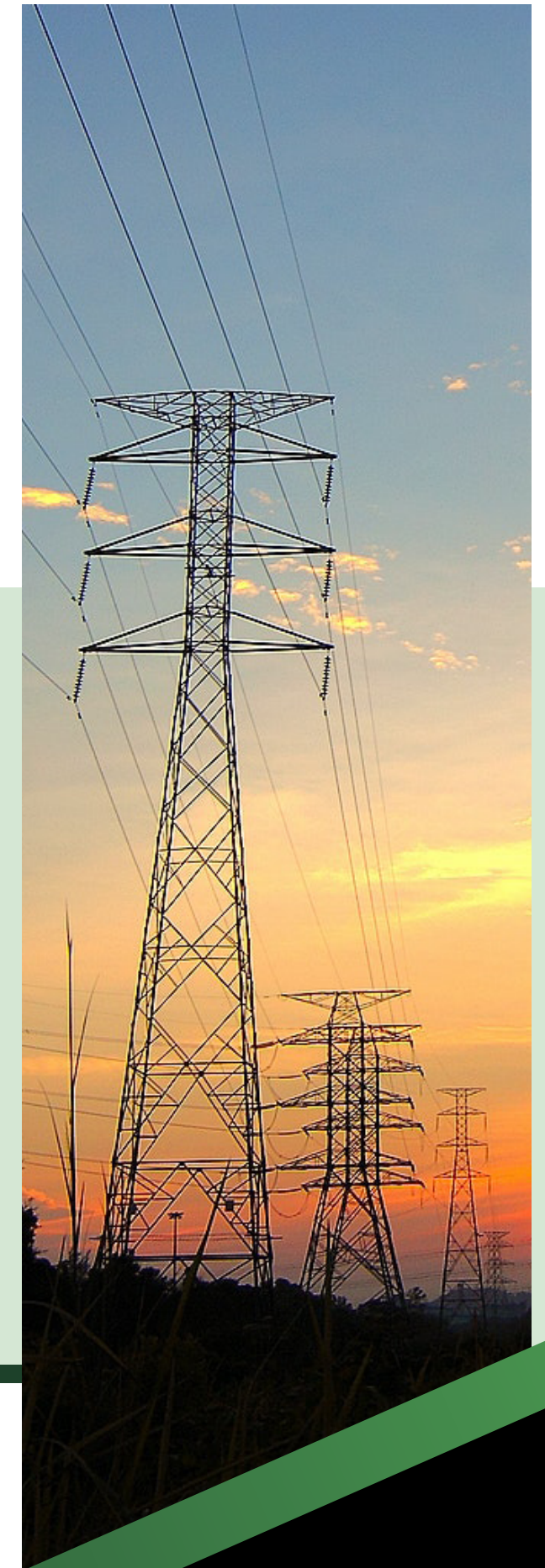


## MARKET SECTORS

With a strong and experienced team, and a wealth of knowledge from all over the world, we offer a range of Electrical, Civil, and Mechanical services, with a focus on the following industries and market sectors.

### Industries:

-  Transport (Road and Rail)
-  Infrastructure
-  Petrochemical
-  Water
-  Power (Power Stations and Substations)
-  Mechanical & Electrical Labour Hire



### SYDNEY (Head Office)

122a Belmore Road, Randwick

### Brisbane

2/12 Chelsea Avenue, Broadbeach

### Cork, Ireland

1 Fair Street, Cork City

### Birmingham, England

103 Colmore Row, Birmingham City

**Phone** 1800 683 660 / (02) 9326 5336

**Email** [admin@e-techgroup.com.au](mailto:admin@e-techgroup.com.au)

**Fax** +61 2 8079 6646







## Level 2 ASP

- Energy Authority Level 2 certified
- Installation of Poles and Overheads lines
- Metering Installation (Smart, CT and Private)
- Underground Mains and Distribution Pillars
- Temporary building supplies
- Three phase upgrades
- Defect repairs
- Disconnects / Reconnects
- Switchboard upgrades

## Civil Construction

- Design & Construct
- Quantity Surveying
- Construction Surveying
- Scanning & locating
- Boring & Drilling
- Detailed Excavation and Trenching
- Bulk Earthworks
- Non Destructive Digging / Vacuum Excavation
- Piling
- Formwork, Reinforcement and Pour (FRP)
- Concrete breakout & reinstatement
- Bitumen breakout & reinstatement
- Retaining Walls
- Asbestos removal
- Conduit Installation
- Hauling Cables
- Rod and Rope
- Plastic Pipe Welding
- Dial Before You Dig Locator certification







## Electrical Labour Hire

Our Electrical labour hire division has a wealth of experience providing highly skilled electrical personnel on a range of commercial projects.

In addition to labour supply for commercial projects, we also have level 1 & 2 and Industrial capabilities in house.

Electrical personal regularly supplied by E-tech Group:

- Licensed
- Unlicensed / Electrical Trade Assistants
- RIW
- Level 2 ASP
- Lines person / cable jointers
- Signaling Electricians
- Instrumentation and process control technicians
- Cable Pullers
- Data and Communication Technicians
- Fire Technicians
- Alarm and Security Technicians
- Splicers
- Electrical Engineers

## Mechanical Labour Hire

Our Mechanical Labour hire division has a wealth of experience providing highly skilled Mechanical personnel on a range of commercial projects.

Mechanical personal regularly supplied by E-Tech Group specialise in:

- Installation and maintenance of heavy equipment including trouble shooting ie: Pumps, compressors, conveyors including trouble shooting of their drive trains
- Installation and maintenance of steel structures such as hoppers, tanks digestors
- Competent to a high standard in non ticketed welding
- Experience in Hydraulics and Pneumatics with a focus on troubleshooting
- Ability to carry out machining activities
- Supervisory experience







## Electrical & Communications

- High Voltage and Low Voltage installations and cable jointing
- LV and HV commissioning
- Earth Grid installations
- Electrical Infrastructure construction works
- Pad mount Substations & Pole Substations – Transformers
- Asset Integrity Inspections
- Power Analysis and Condition Monitoring
- Thermo-graphic Inspections and reporting
- Public Street lighting, etc.
- Optical Fiber Installation
- Large optical Fibre cable hauling
- FFTB/FFTN installation
- NBN infrastructure

## Key Projects

### Electrical

- Strathfield to Homebush Rail Upgrade – HV Cable install
- Leppington Stabling Yard – Pit, Pipe and Cable installation
- FTB Electrical Metering – Throughout Sydney
- Energy Australia Metering and Connections
- NBN fibre Installations

### Civil

- Strathfield to Homebush Rail Upgrade – HV Pit, Pipe
- Leppington Stabling Yard – Pit, Pipe and Cable installation
- NBN Pit and Pipe
- Caltex Maintenance
- Delta Energy Power Station – Cenosphere Removal

## Our Partners







**E-TECH**

CIVIL & ELECTRICAL

[www.e-techgroup.com.au](http://www.e-techgroup.com.au)

Australia | UK | Ireland